



**Lenham, Maidstone, Kent, ME17 2FE**

**Guide Price £580,000**





**\*\*GUIDE PRICE £580,000 - £600,000\*\***Introducing this delightful, recently built four-bedroom detached family home situated on Stocks Way in Lenham. This property is available on a chain-free basis, making it an excellent option for those looking to move quickly.

Step inside to find an inviting entrance hall which leads to a spacious living room one side, and a separate study/playroom the other. The generously sized contemporary kitchen complete with luxurious Quartz work surfaces, is open-plan with the generous dining area, ideal for family meals and entertaining. The lovely sunroom, which opens directly onto the rear garden via the bi-fold doors, offers a peaceful retreat for enjoying the outdoors, whether for your morning coffee or evening unwinding. A W.C. and a utility room complete the ground floor.

Upstairs, four generously sized bedrooms provide ample space for large or growing families and visitors alike. The principal bedroom comes complete with a modern en-suite bathroom, whilst the remaining three share the use of the modern family bathroom.

Outside, the property benefits from a driveway for two vehicles and a detached garage, offering convenient storage or parking solutions, whilst the landscaped rear garden boasts a generous patio seating area, composite decked area, and an artificial lawn, offering plenty of space for socialising. Tenure: Freehold. EPC rating: B. Council Tax Band: F.



## LOCATION

Lenham is a highly desirable village situated between Ashford and Maidstone, boasting a range of amenities such as 17th-century pubs, tearooms, shops, and a historic market square. The village also has primary and secondary schools, along with a railway station. The M20 motorway is easily accessible from Leeds Castle, which is about five miles distant.

## GROUND FLOOR

Entrance Hall

Lounge

Study

Kitchen/Dining Room

Sun Room

Utility

W.C.

## FIRST FLOOR

Landing

Bedroom One

En-suite Shower Room

Bedroom Two

Bedroom Three

Bedroom Four

Family Bathroom

EXTERNALLY

Front Garden

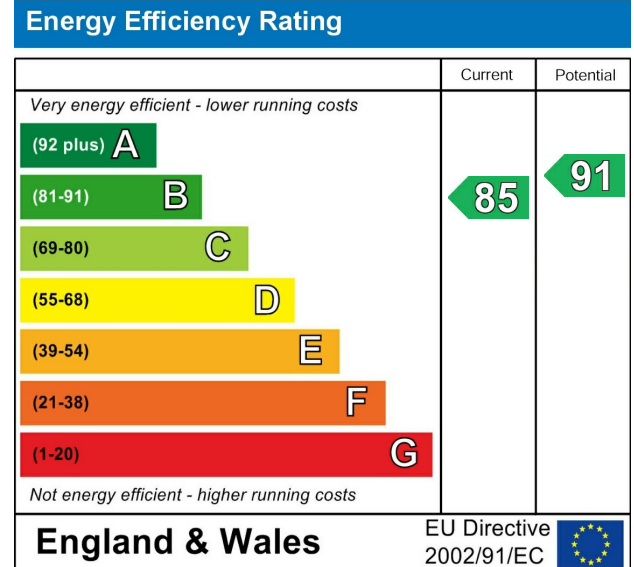
Driveway

Garage

Rear Garden

## VIEWING

Strictly by arrangement with the Agent's Bearsted Office, 132 Ashford Road, Bearsted, Maidstone, Kent ME14 4LX. Tel: 01622 739574.



Page & Wells limited for themselves and for the vendors of this property whose agents they are give notice that: 1. These particulars do not constitute any part of, an offer or a contract. 2. All statements contained in these particulars as to this property are made without responsibility on the part of Page & Wells Limited or the Vendor. 3. None of the statements contained in these particulars as to the property is to be relied on as statements or representations of fact. 4. Any intending purchaser must satisfy himself by inspection or otherwise as to the correctness of each of the statements contained in these particulars. 5. The vendor does not make or give, and neither Page & Wells Limited nor any person in their employment has any authority to make or give any representation whatsoever in relation to this property. These particulars are supplied on the understanding that all negotiations are carried out throughout Page & Wells Limited. Properties with a reference prefixes EAA are those which Page & Wells Limited disclose an interest in accordance with the provisions of the Estates Agents Act 1979



Stocks Way, Lenham, Maidstone, ME17 2FE

Approximate Gross Internal Area

Main House = 147.95 SqM 1592.5 sq.ft

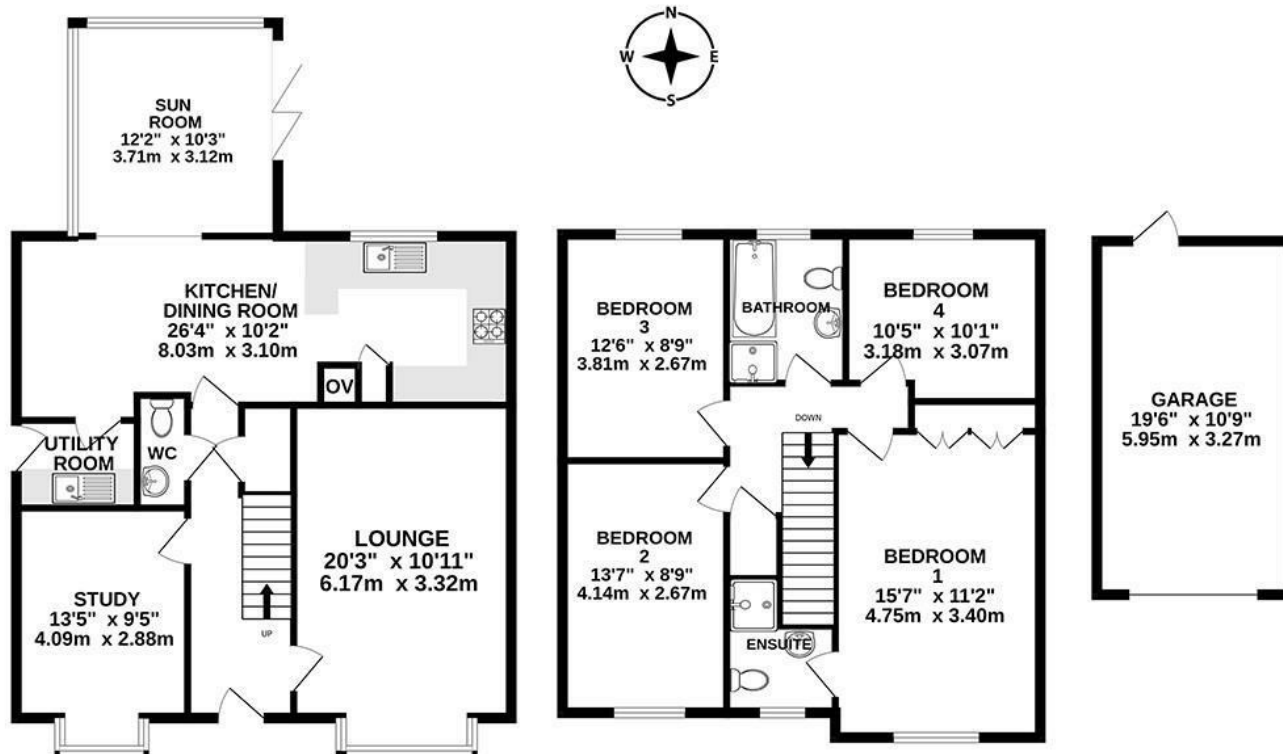
Outbuildings = 19.45 SqM 209.3 sq.ft

Total = 167.4 SqM 1802sq.ft

GROUND FLOOR  
880 sq.ft. (81.8 sq.m.) approx.

1ST FLOOR  
712 sq.ft. (66.1 sq.m.) approx.

OUTBUILDINGS  
210 sq.ft. (19.5 sq.m.) approx.



TOTAL FLOOR AREA : 1802 sq.ft. (167.4 sq.m.) approx.

Whilst every attempt has been made to ensure the accuracy of the floorplan contained here, measurements of doors, windows, rooms and any other items are approximate and no responsibility is taken for any error, omission or mis-statement. This plan is for illustrative purposes only and should be used as such by any prospective purchaser. The services, systems and appliances shown have not been tested and no guarantee as to their operability or efficiency can be given.  
Made with Metropix ©2025

